

- Legend:**
- Limits of land to be acquired or used
 - Acquisition of land
 - Acquisition and/or creation of rights
 - Acquisition of existing rights
 - Temporary possession of land
 - No compulsory acquisition powers sought
 - Special Category Land: Common Land (Burbage Common)
 - District Boundaries

- Notes:**
1. The Legend is identical on all sheets of the Land Plans and therefore not all items detailed in the Legend are represented on each sheet.
 2. These Land Plans should be read in conjunction with the Book of Reference (Document 4.3)
 3. All easements, servitudes and private rights in the land shown coloured pink on these plans are proposed to be extinguished.
 4. All easements, servitudes and private rights in the land shown coloured blue and/or green on these plans are proposed to be extinguished.
 5. All easements, servitudes and private rights in the land shown coloured yellow on these plans are proposed to be suspended during the undertaker's temporary possession of that land.

Created by:
 TerraQuest Solutions Limited
 Quayside Tower
 252-260 Broad Street
 Birmingham
 B1 2HF
 w: www.terraquest.co.uk
 e: info@terraquest.co.uk



Created for:
 Tritax Symmetry Management Limited
 Grange Park Court
 Roman Way
 Northampton
 NN4 5EA



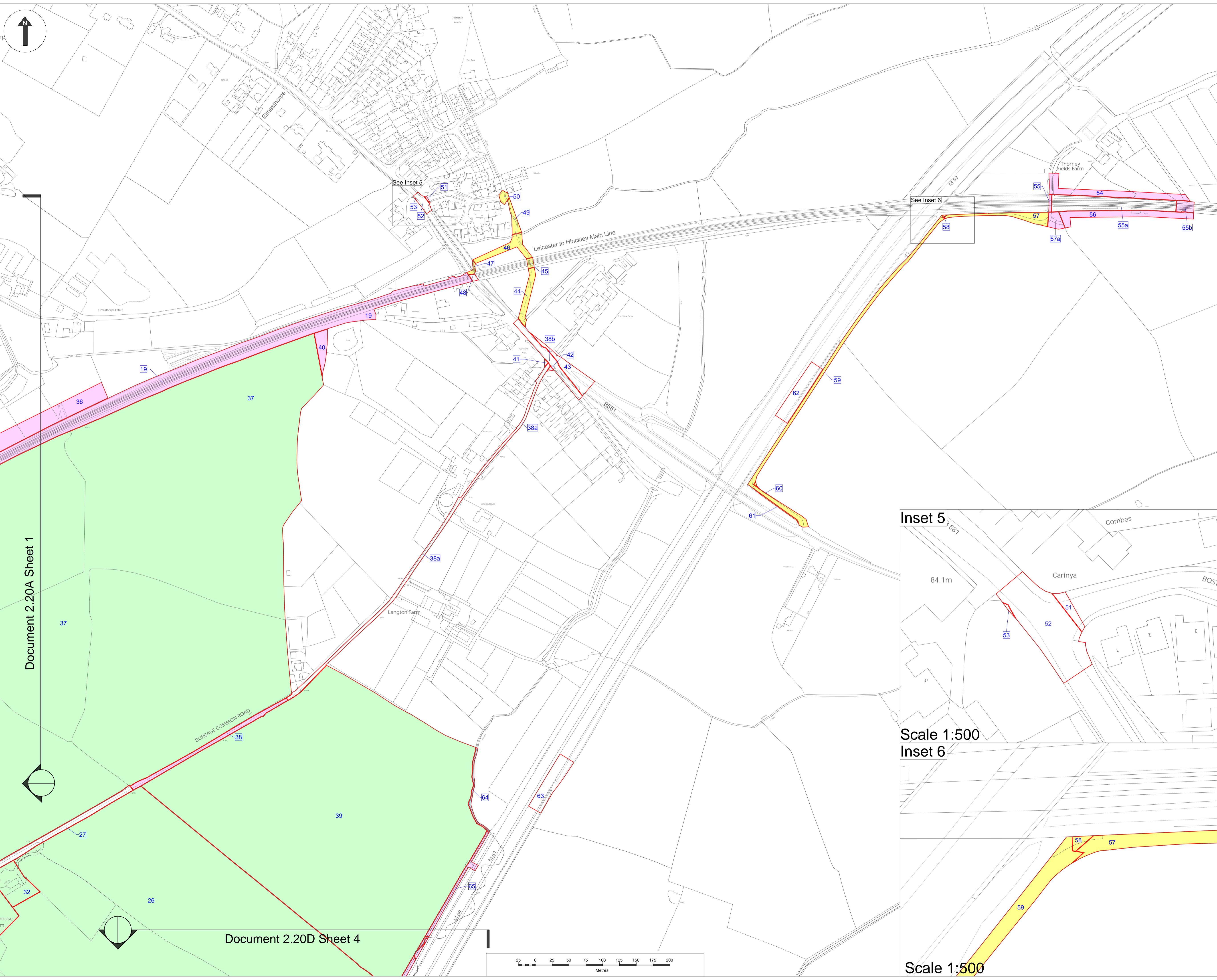
Title:
Hinckley National Rail Freight Interchange Land Plan Sheet 2 of 8

Scale: 1:2,500@A1 Date: 16/03/2023

Drawing No: 1842-8018_003341 Revision: v12

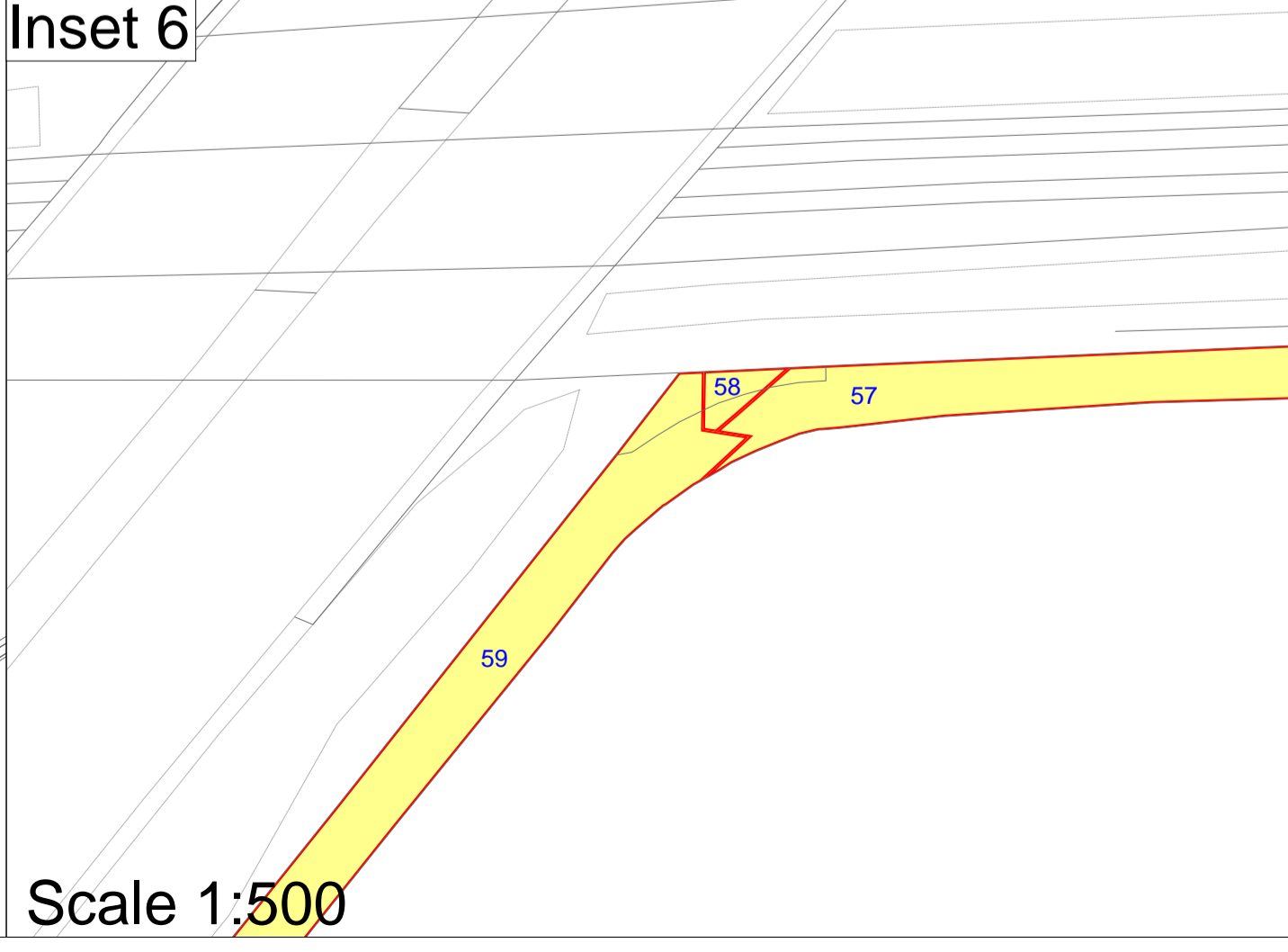
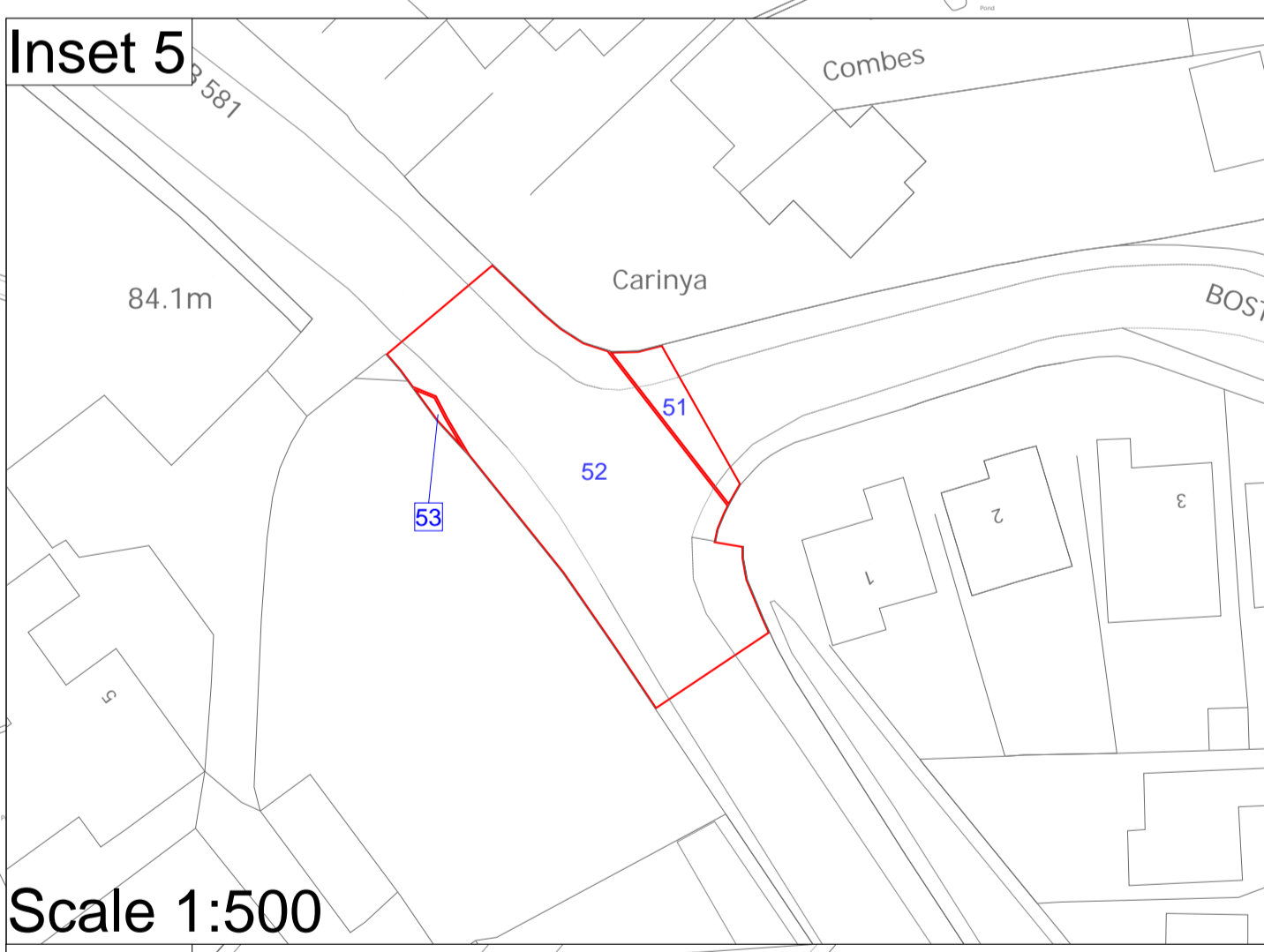
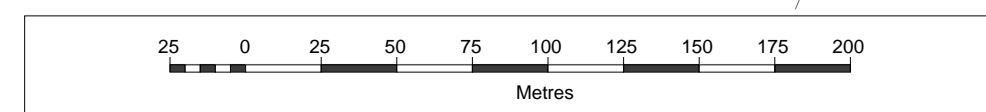
Drawing Ref: 2.20B Regulation: 5(2) (i)

Approved By: SAN	Checked By: MKE	Drawn By: JWY
---------------------	--------------------	------------------



Document 2.20A Sheet 1

Document 2.20D Sheet 4



Scale 1:500

Inset 6

Scale 1:500

