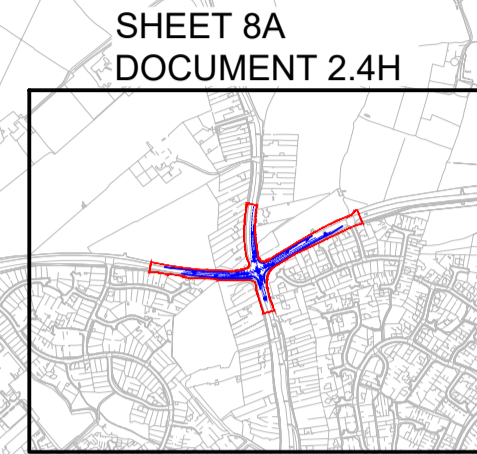


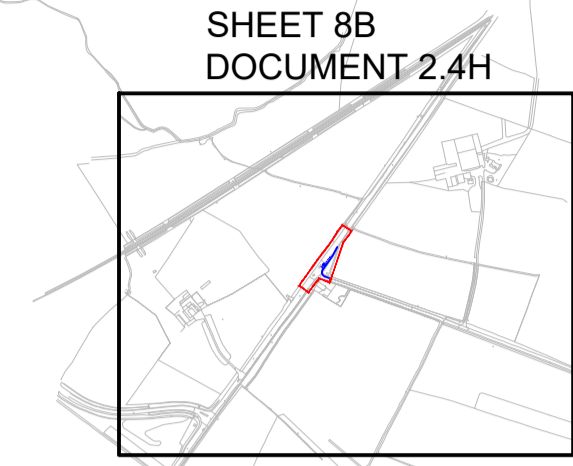
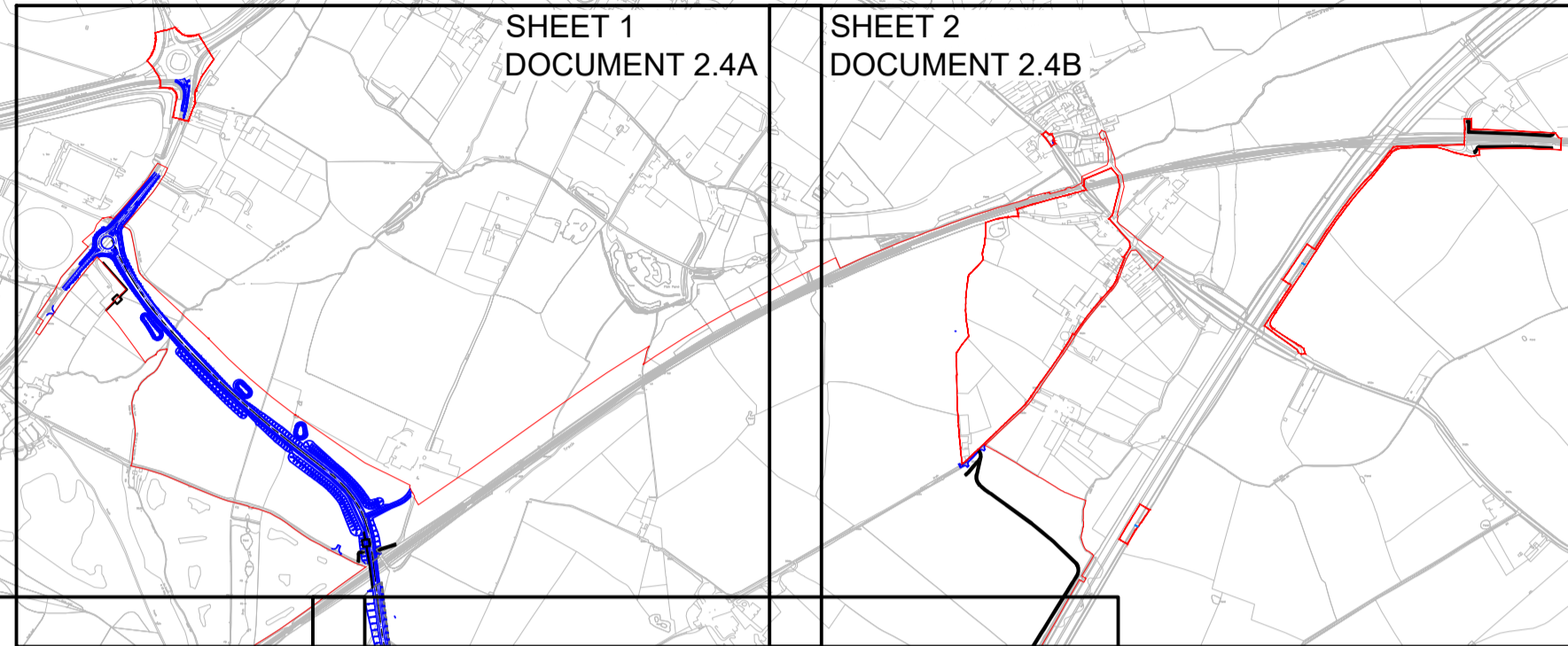


Notes

The purpose of the Highway Plans is to illustrate highway mitigation works proposed in relation to the Hinckley National Rail Freight Interchange.



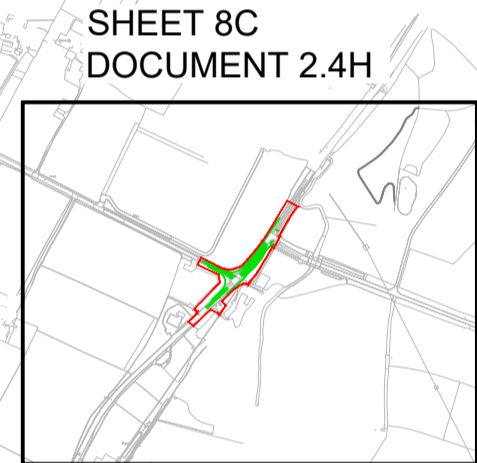
SHEET 3
DOCUMENT 2.4C



SHEET 4
DOCUMENT 2.4D

SHEET 7B
DOCUMENT 2.4G

SHEET 7A
DOCUMENT 2.4G

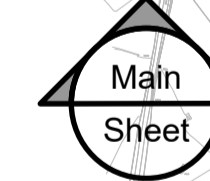


SHEET 5
DOCUMENT 2.4E

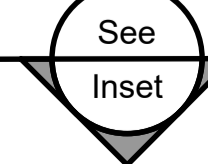
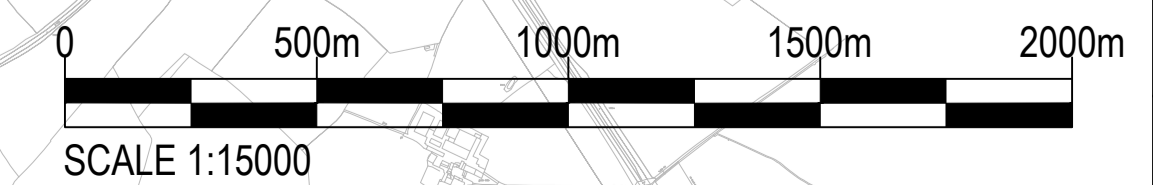
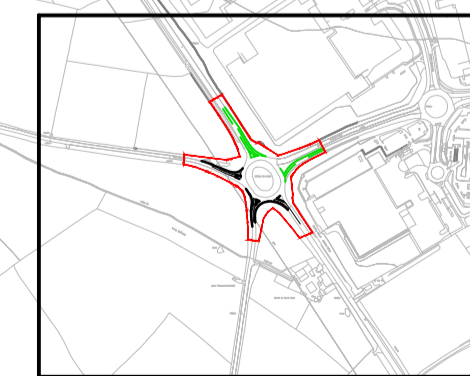
SHEET 7C
DOCUMENT 2.4G

SHEET 6
DOCUMENT 2.4F

For location refer to drawing HRF-BWB-LSI-XX-DR-CH-00001_Document 2.27_Order Limits Plan



SHEET 8D
DOCUMENT 2.4H



P02	30.11.22	Final Issue	DF	SC
P01	16.12.21	Issue for Consultation	DF	SC
Rev	Date	Details of issue / revision	Drw	Chd

Issues & Revisions

Client



Project Title

HINCKLEY NATIONAL RAIL FREIGHT INTERCHANGE

Drawing Title

HIGHWAY PLANS KEY PLAN

Regulation: **5(2) (o)** Document: **2.4**

Drawn: D. Fraser Checked: S. Carter

BWB Ref: NTT 2814 Date: 17.12.21 Scale@A1: 1:15000

Project - Originator - Functional Breakdown - Spatial Breakdown - Form - Discipline - Number

HRF-BWB-LSI-ZZ-DR-CH-00100

Drawing Status

S4 - FINAL

Rev

P02