

Appendix 5.6 (Part 1 of 2)

## SITE NOTICE

### Planning Act 2008

db symmetry is bringing forward proposals for the Hinckley National Rail Freight Interchange (HNRFI) at junction 2 of the M69. The scheme is considered to be a Nationally Significant Infrastructure Project (NSIP) and includes alterations to Junction 2 of the M69 to provide all-ways movement. A NSIP is a development proposal of a particular type and scale which is determined by the Government at a national level. A Development Consent Order is the statutory process for obtaining planning permission for NSIPs.

db symmetry is preparing an application for a Development Consent Order to construct the HNRFI on land to the north-east of Hinckley, south of Elmesthorpe between the Felixstowe to Nuneaton railway, west of the M69 in Blaby District.

The proposals include:

- Railway sidings and a rail port.
- A dedicated road access directly from junction 2 of the M69 together with the addition of a new northbound off-slip and a southbound on-slip.
- Up to 850,000 square metres of high-bay storage and logistics buildings.
- Land for landscape and planting works, ecological mitigation, drainage balancing ponds and footpath, cycleway and bridleway connections.

db symmetry is hosting informal public exhibitions of these proposals at the following locations:

Friday 26th October, 2pm-8pm – Elmesthorpe Village Hall, Wilkinson Lane, Elmesthorpe, Leicester LE9 7SP

Saturday 27th October, 10am-1pm – Elmesthorpe Village Hall, Wilkinson Lane, Elmesthorpe, Leicester LE9 7SP

Monday 29th October, 3pm-8pm – Burbage Millennium Hall, Britannia Rd, Burbage, Hinckley LE10 2HF

Wednesday 31st October, 2pm-8pm – Sapcote Methodist Church, 39 Leicester Road, Sapcote, Leicester LE9 4JE

Friday 2nd November, 1pm-7pm – Stoney Stanton Village Hall, New Road, Stoney Stanton, Leicestershire, LE9 4LQ

Wednesday 7th November, 2pm-8pm – The George Ward Centre, Church Lane, Barwell LE9 8DG

Friday 9th November, 12pm-6pm – St Francis Community Centre, Tudor Rd, Hinckley, Leicestershire, LE10 0EQ

Saturday 10th November, 12pm-6pm – St Francis Community Centre, Tudor Rd, Hinckley, Leicestershire, LE10 0EQ

A second consultation exercise is expected to be undertaken during Spring 2019.

**Members of the public are invited to attend the exhibition at any of these dates.**

More information on the project can be sourced from the following website <http://www.hinckleynrfi.co.uk/>

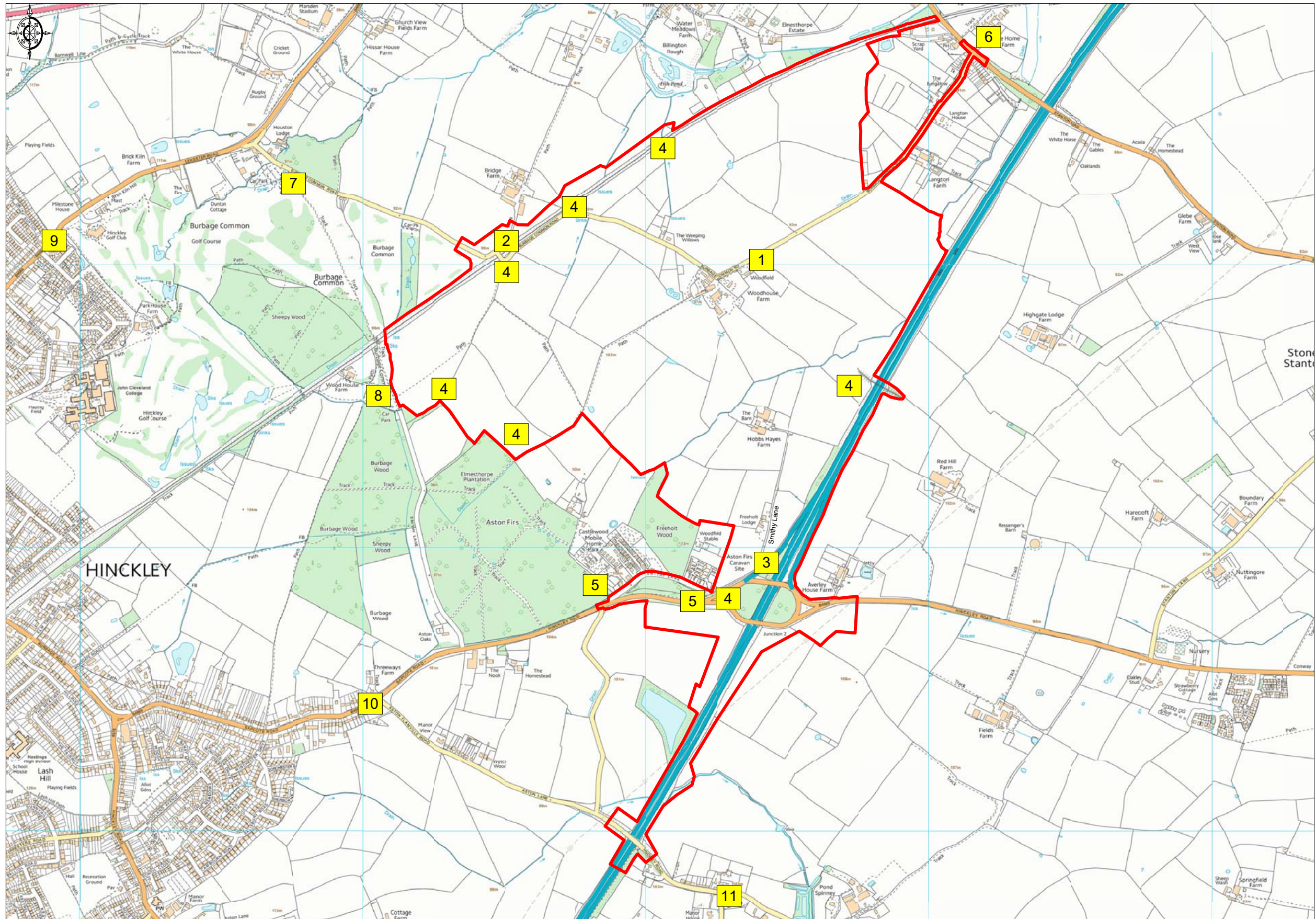
P.J. Frampton

Framptons Town Planning Ltd

[www.framptons-planning.com](http://www.framptons-planning.com)

8<sup>th</sup> October 2018

Locations for Site Notices



# 1 - Burbage Common Road South of Elmesthorpe

Post Code: LE9 7SE



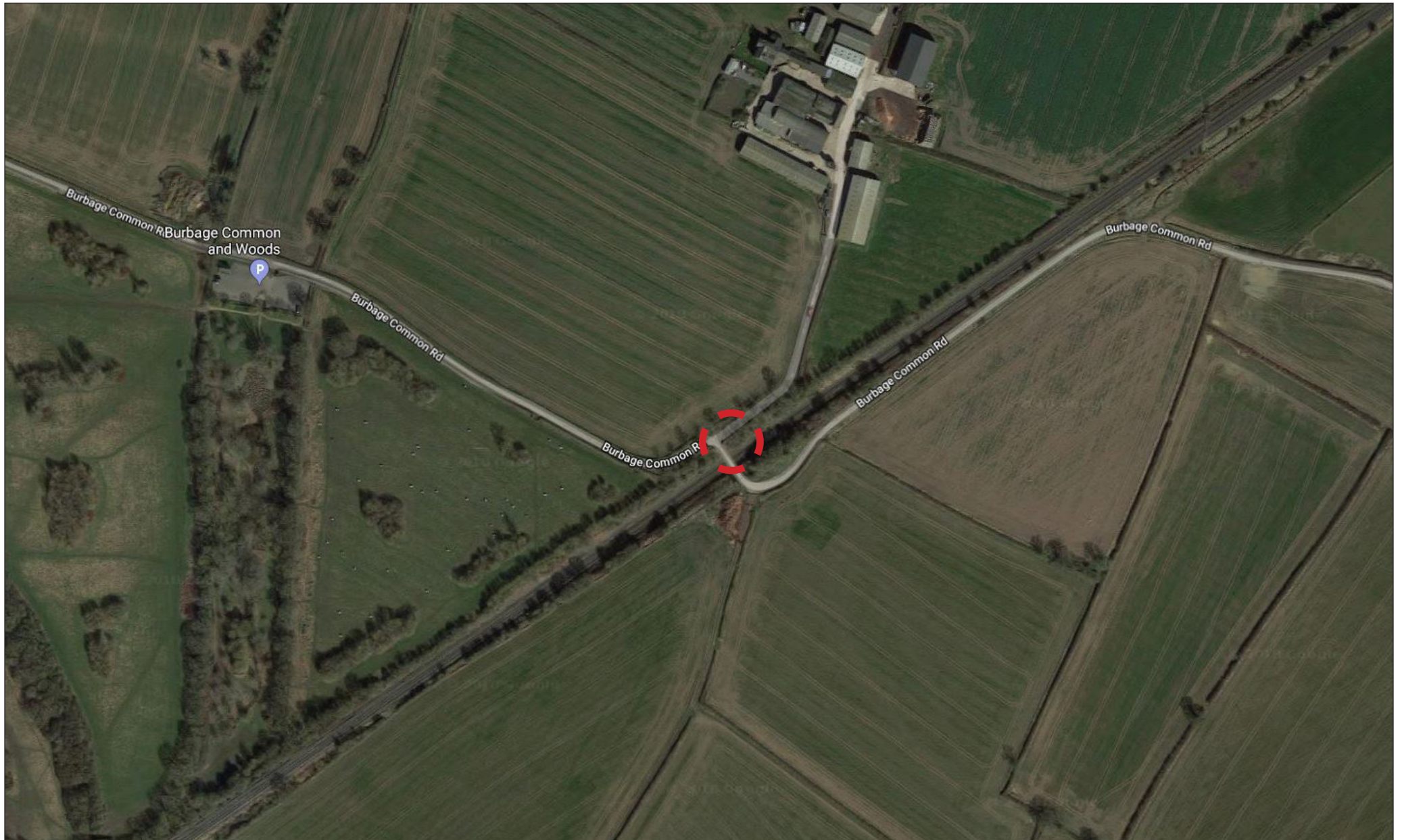
# 1 - Burbage Common Road South of Elmesthorpe

Pictures were taken at 11.25 on Tuesday 9th October 2018



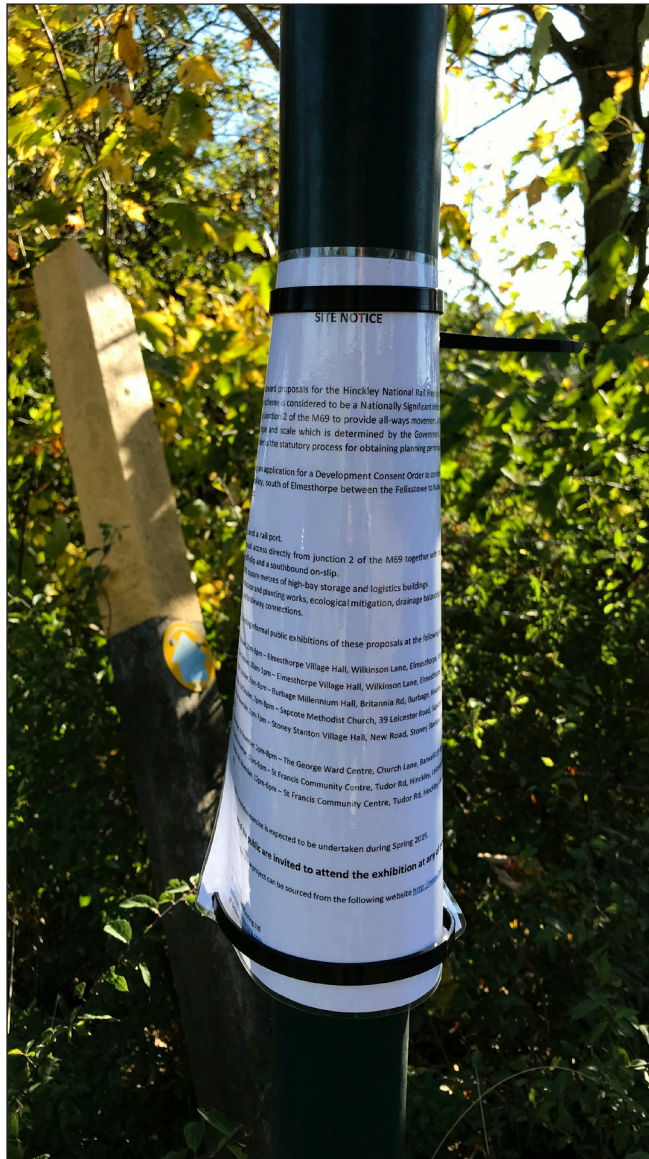
## 2 - Burbage Common Road at Railway Bridge

Post Code: LE10 3DD

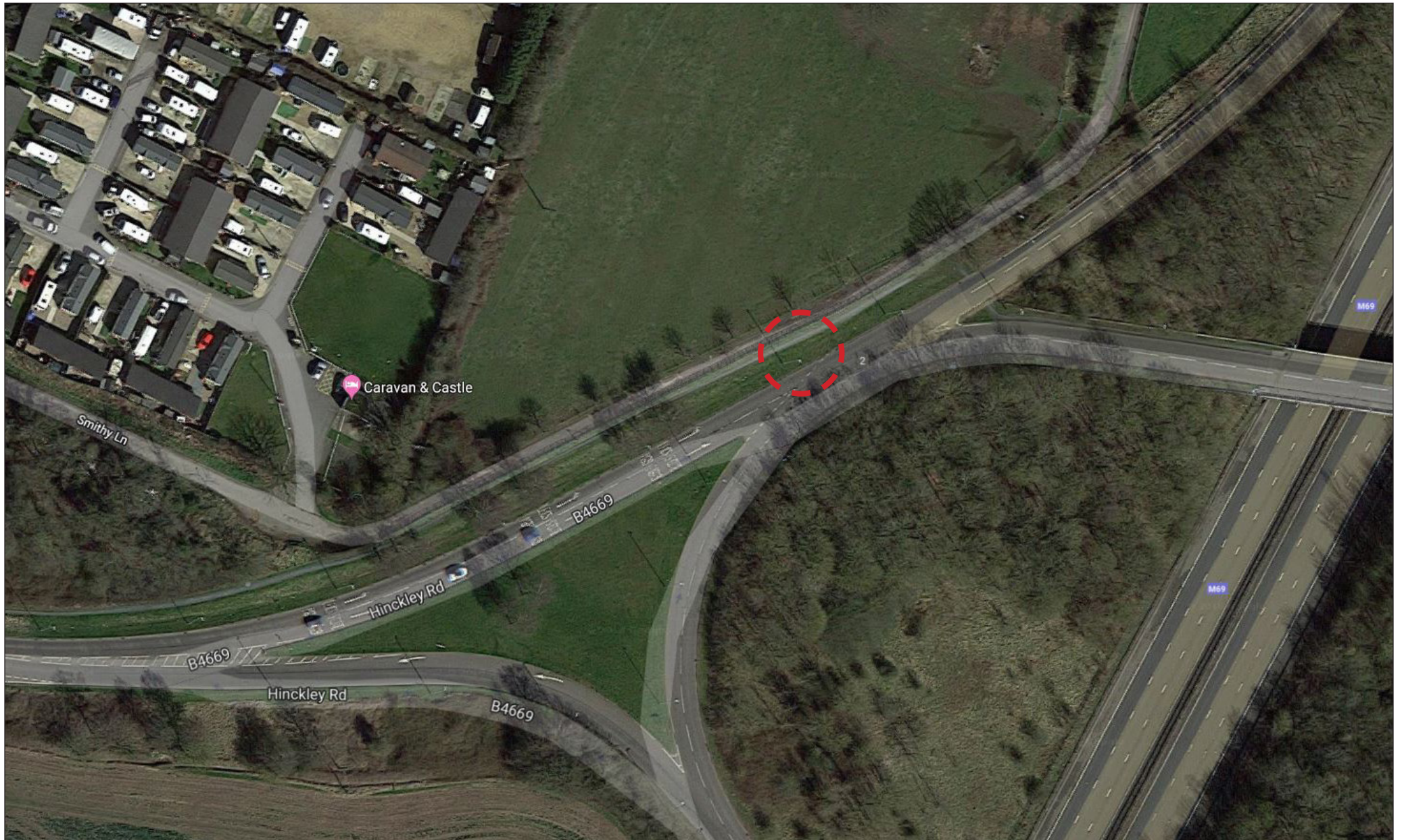


## 2 - Burbage Common Road at Railway Bridge

Pictures were taken at 10.45 on Tuesday 9th October 2018



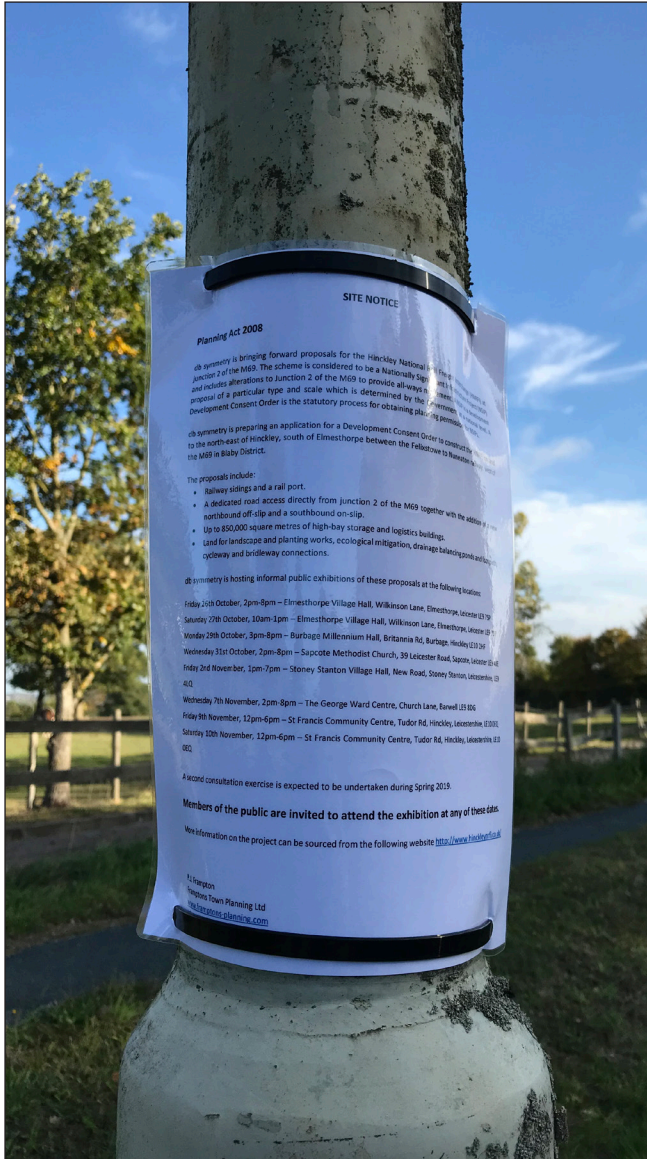
### 3. Road Junction leading from M69 J2 (Private Road)



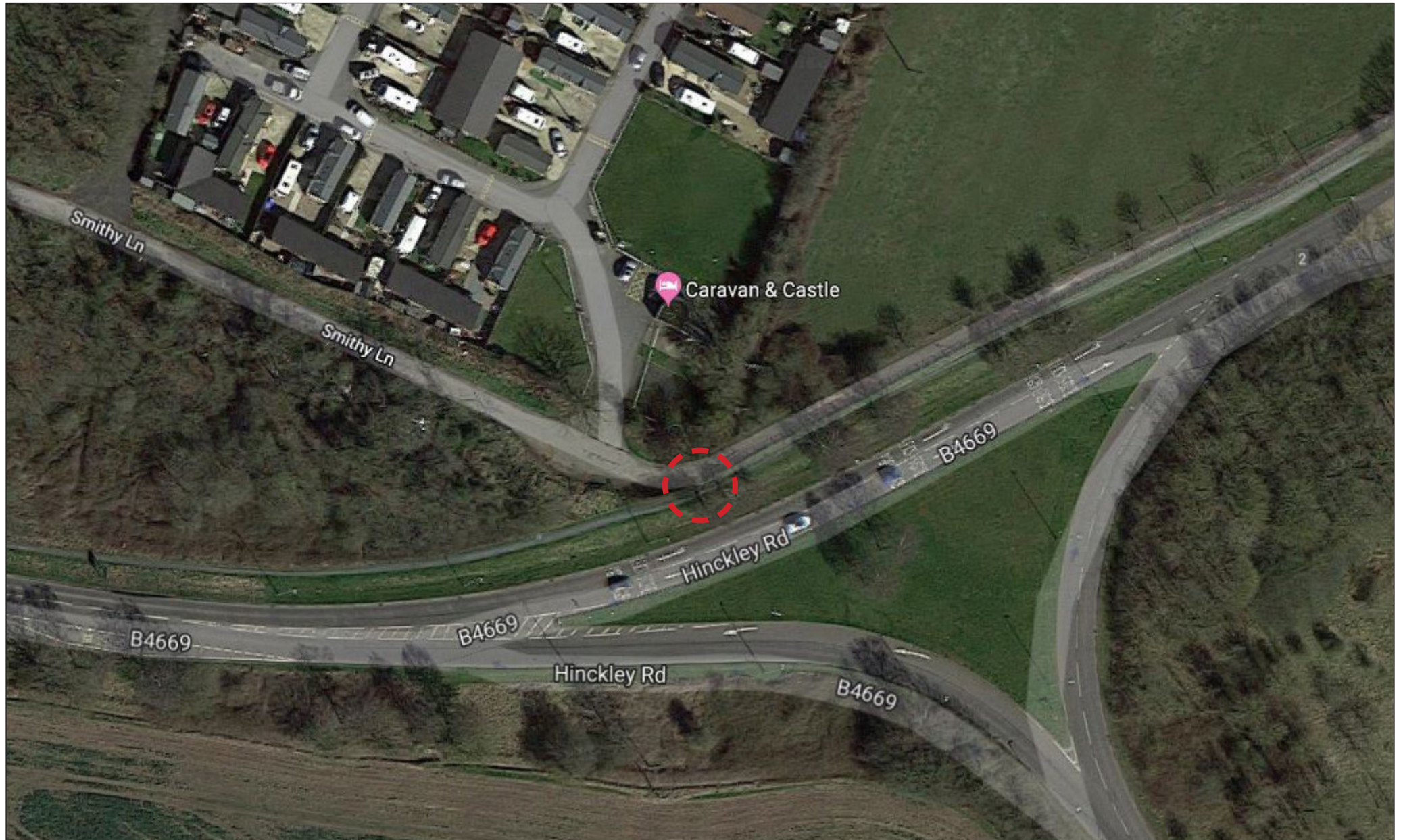


### 3. Road Junction leading from M69 J2 (Private Road)

Pictures were taken at 09.37 on Tuesday 9th October 2018

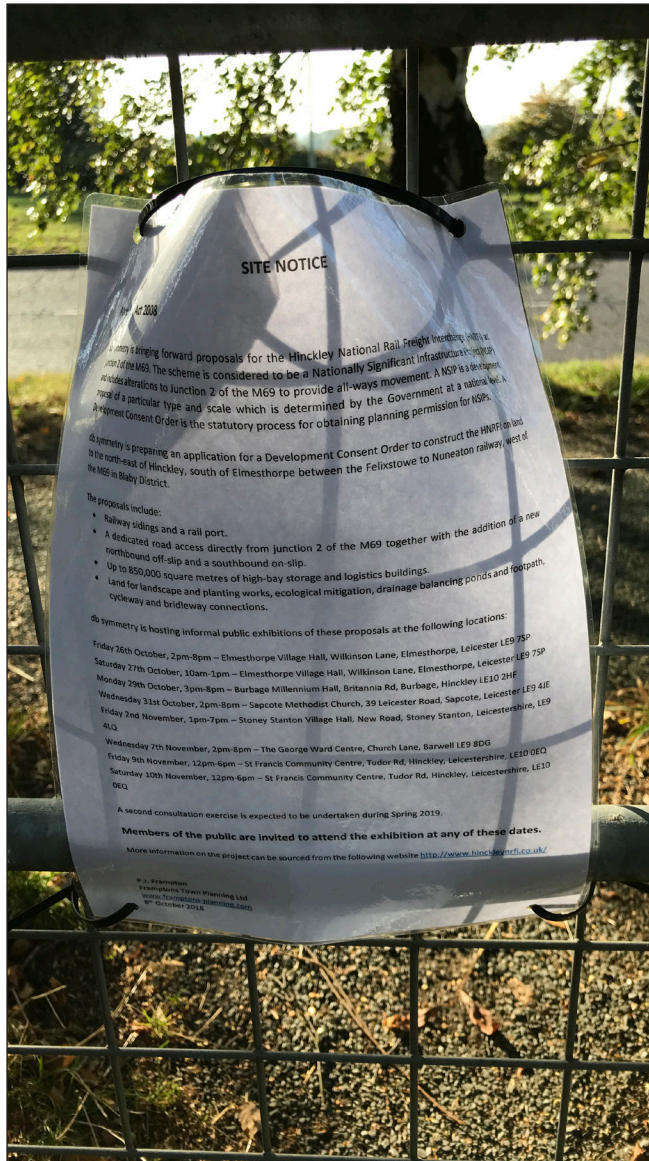


4a - Along the Public Right of Way at the point of entry-exit



## 4a - Along the Public Right of Way at the point of entry-exit

Pictures were taken at 09.33 on Tuesday 9th October 2018



4b - Along the Public Right of Way at the point of entry-exit



## 4b - Along the Public Right of Way at the point of entry-exit

Pictures were taken at 09.56 on Tuesday 9th October 2018



4c - Along the Public Right of Way at the point of entry-exit





4d - Along the Public Right of Way at the point of entry-exit





#### 4d - Along the Public Right of Way at the point of entry-exit

Pictures were taken at 10.47 on Tuesday 9th October 2018

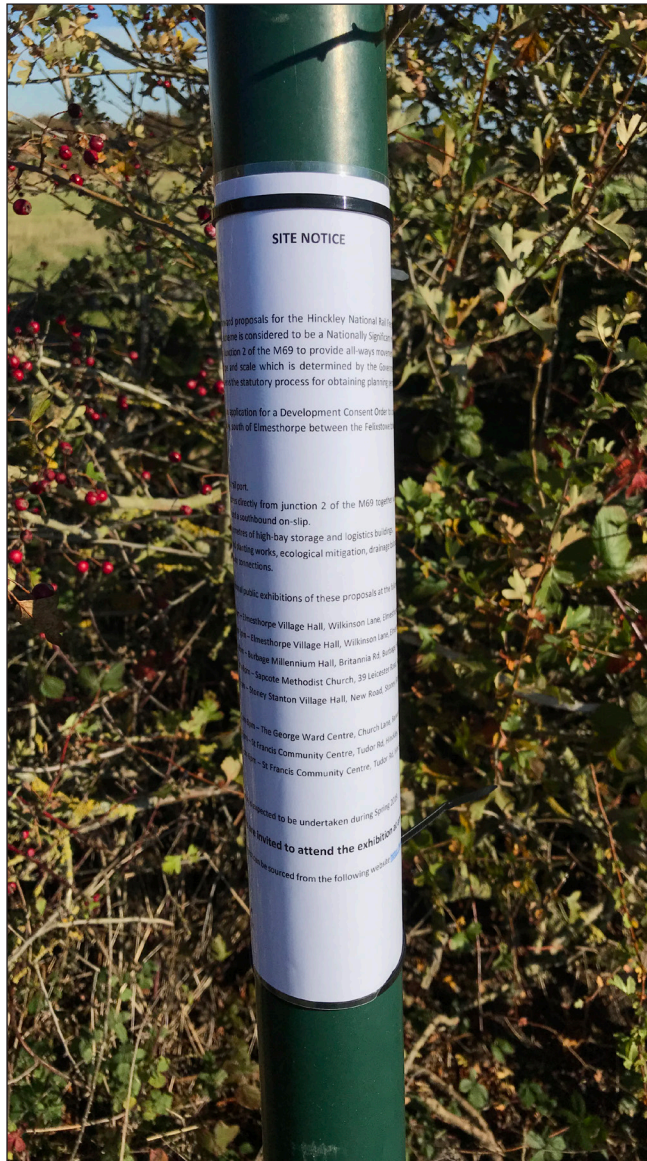


4e - Along the Public Right of Way at the point of entry-exit

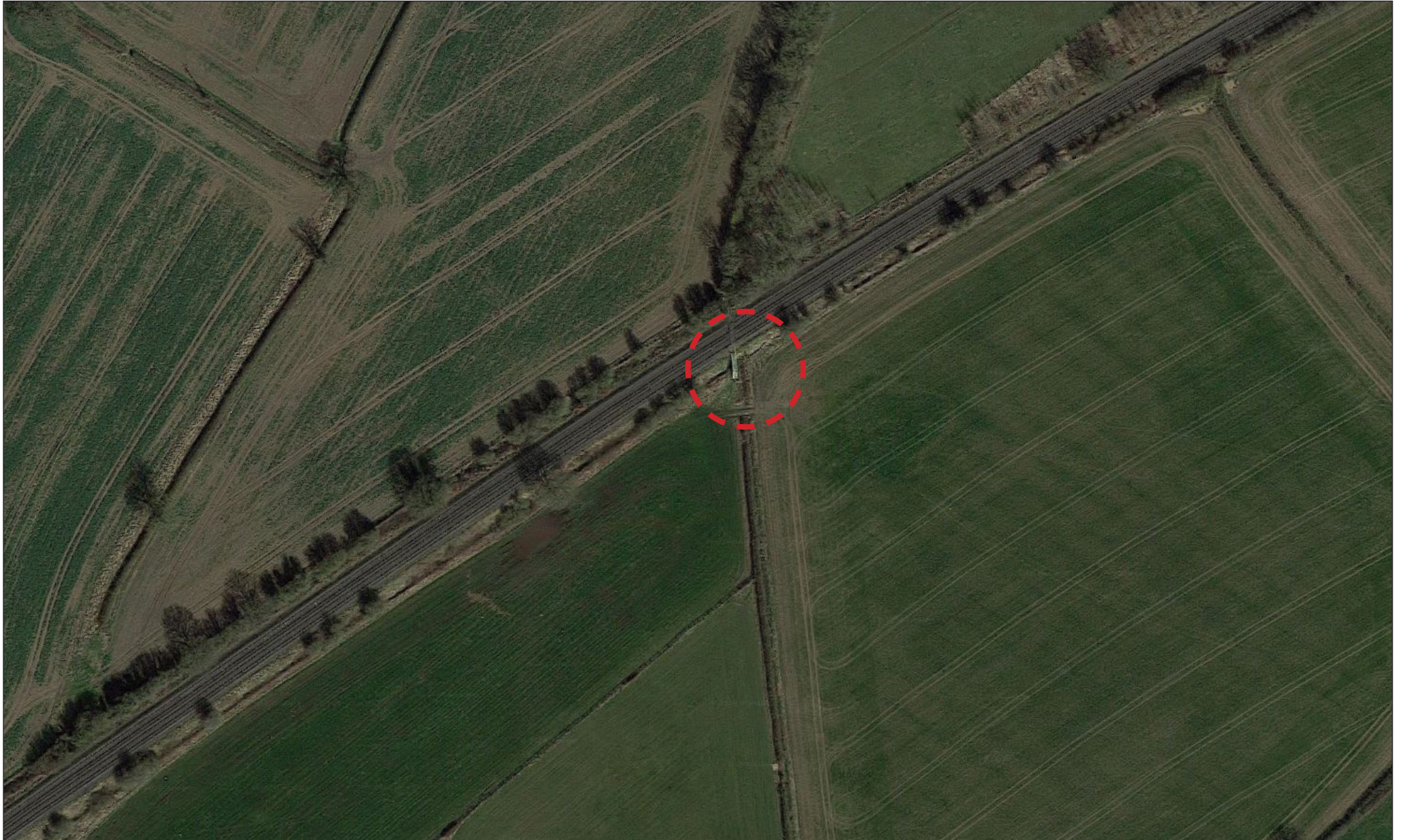


#### 4e - Along the Public Right of Way at the point of entry-exit

Pictures were taken at 10.51 on Tuesday 9th October 2018

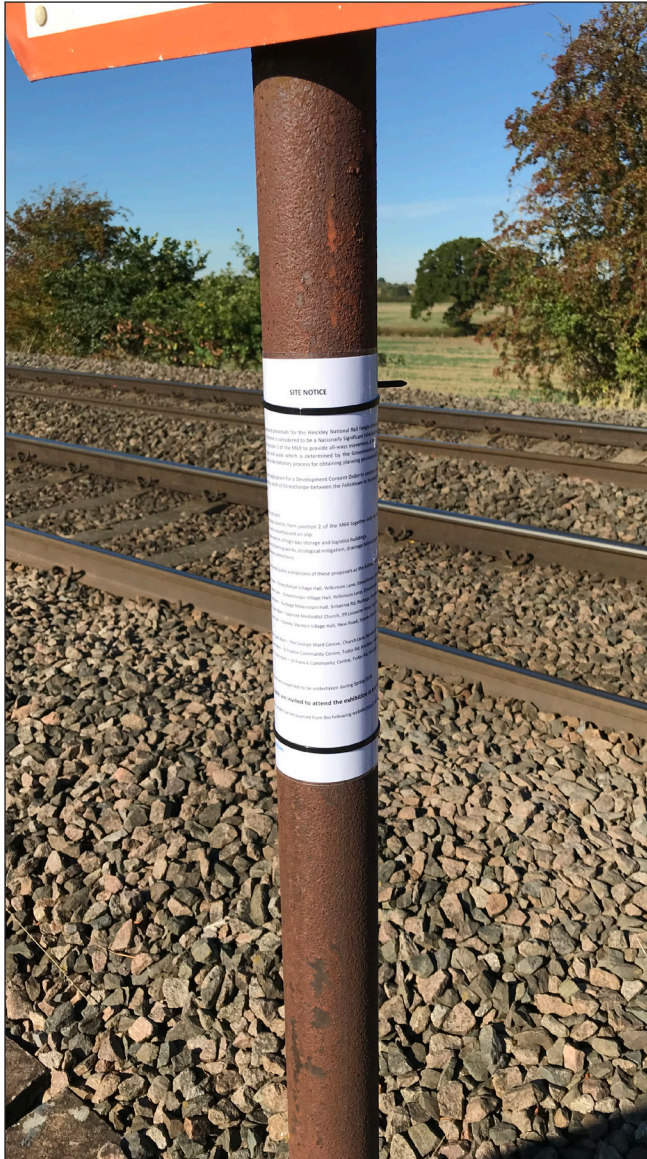


4f - Along the Public Right of Way at the point of entry-exit

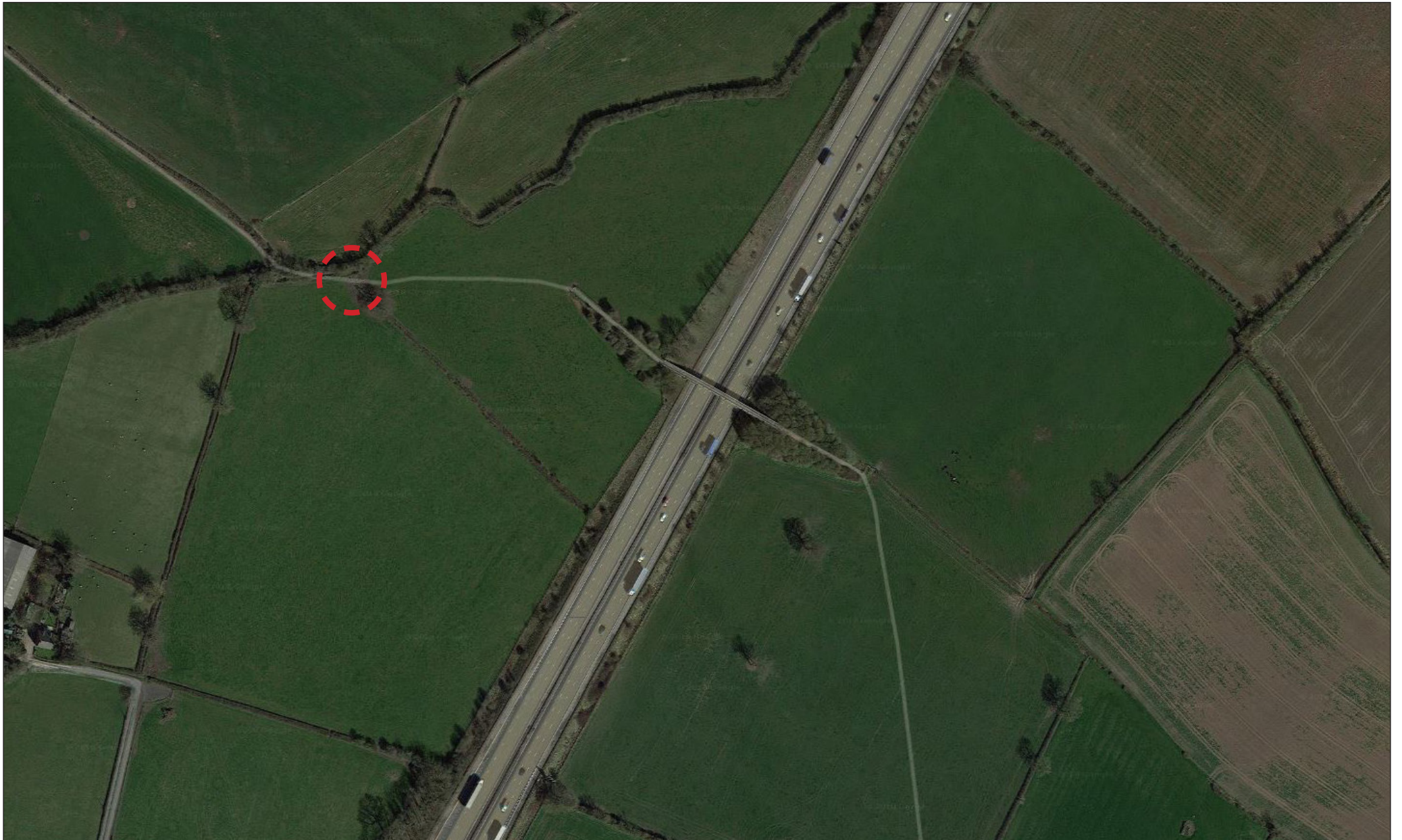


#### 4f - Along the Public Right of Way at the point of entry-exit

Pictures were taken at 10.57 on Tuesday 9th October 2018



4g - Along the Public Right of Way at the point of entry-exit



## 4g - Along the Public Right of Way at the point of entry-exit

Pictures were taken at 11.17 on Tuesday 9th October 2018

