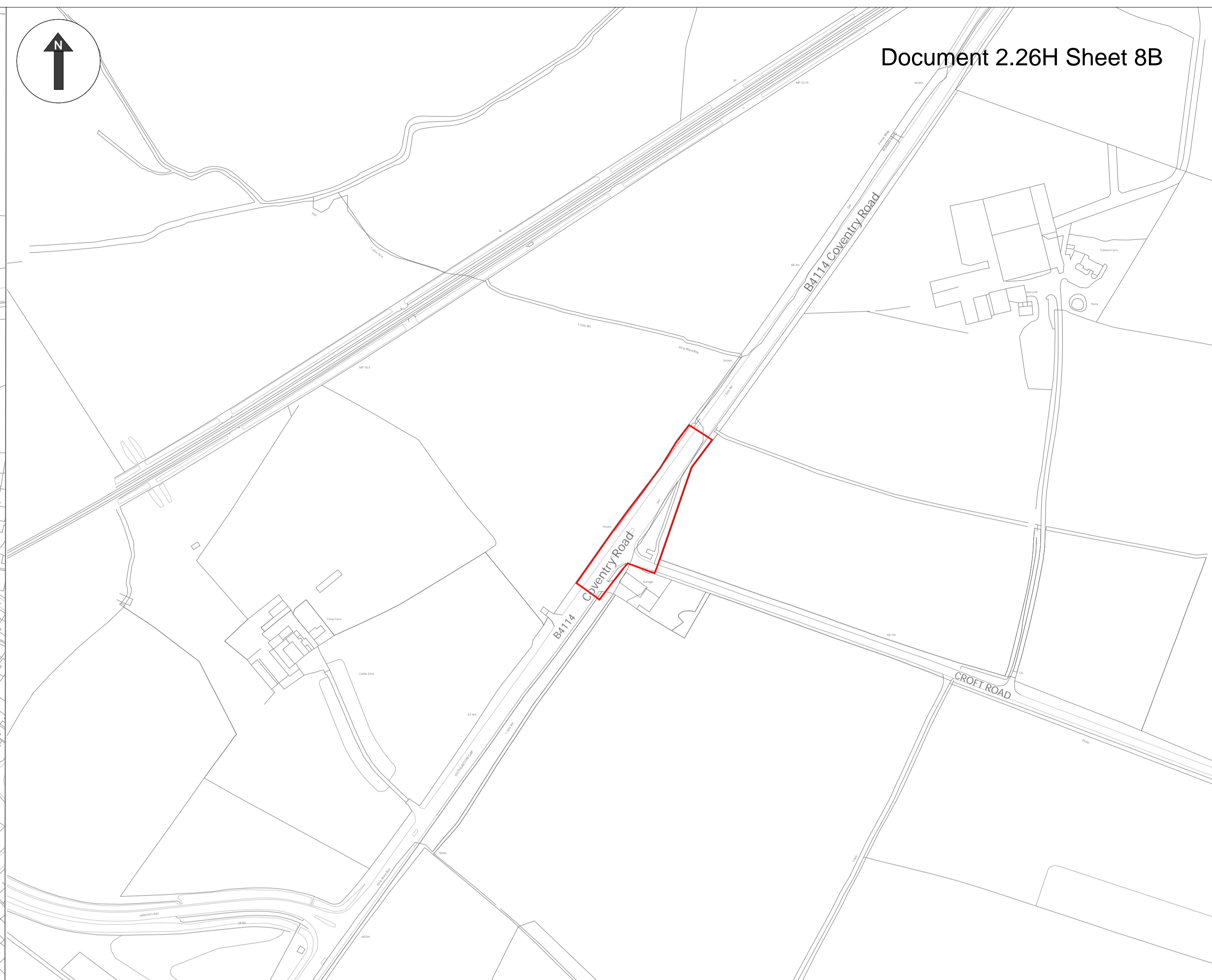
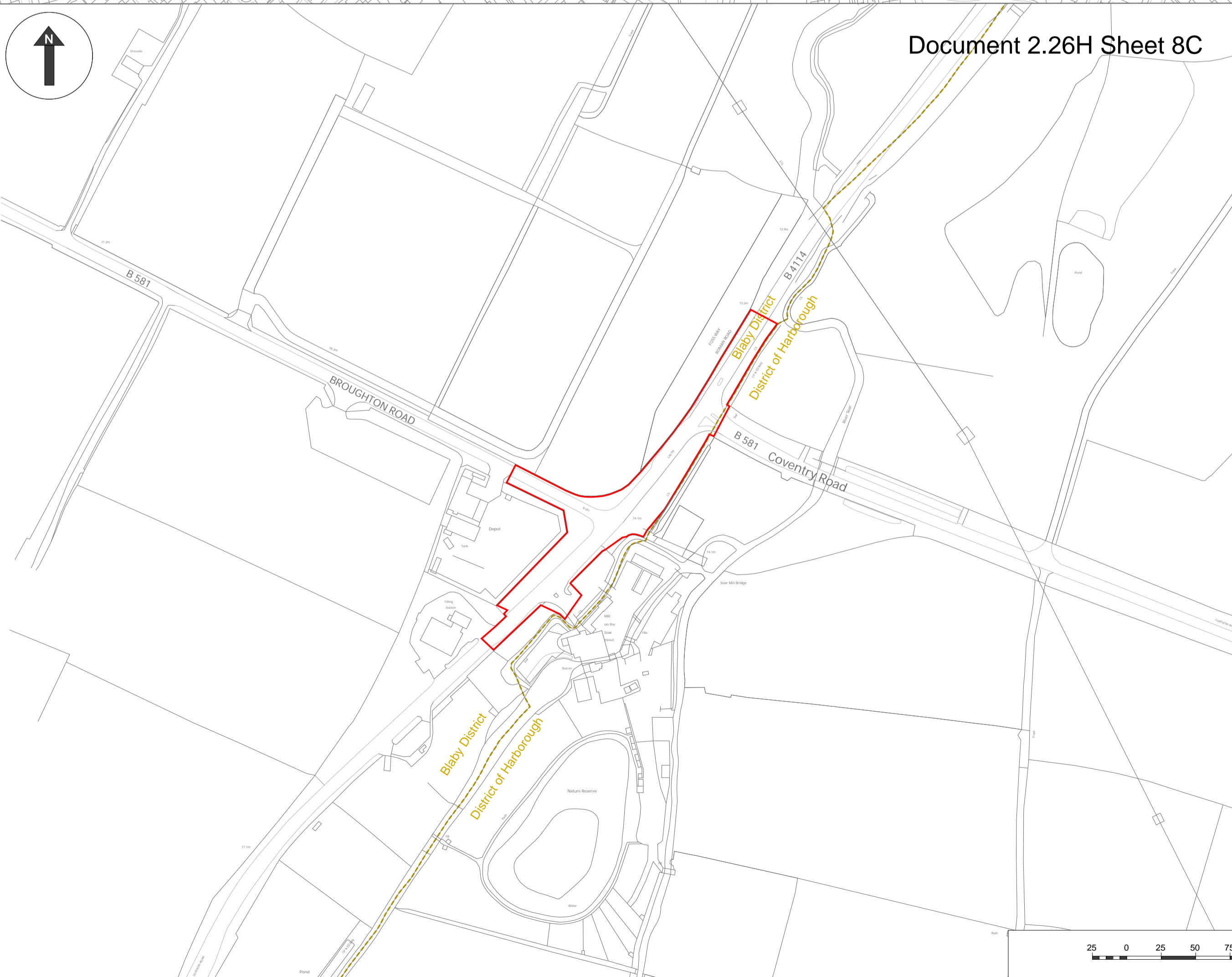


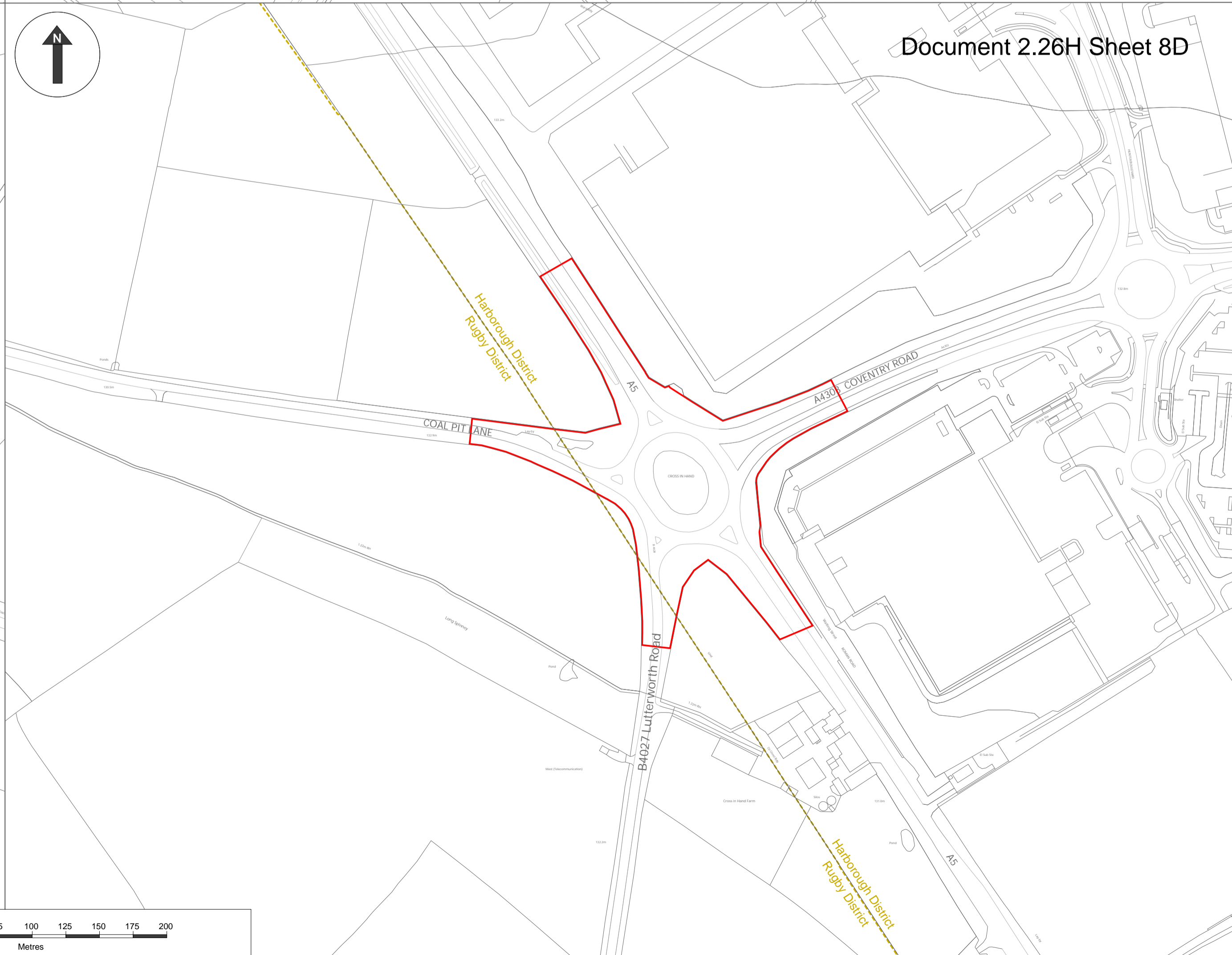
Document 2.26H Sheet 8A



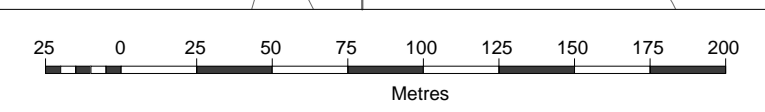
Document 2.26H Sheet 8B



Document 2.26H Sheet 8C



Document 2.26H Sheet 8D



© Crown copyright. All rights reserved.
2021 Licence number 100030835

- Legend:
- Order Limits
 - Crown Land (adopted highway - no compulsory acquisition sought)
 - Crown Land (subsoil beneath adopted highway - no compulsory acquisition sought)
 - Crown Land (rights in land)
 - District Boundaries

- Notes:
1. The Legend is identical on all sheets of the Crown Land Plans and therefore not all items detailed in the Legend are represented on each sheet.
 2. These Crown Land Plans should be read in conjunction with the Book of Reference (Document 4.3)

Created by:
TerraQuest Solutions Limited
Quayside Tower
252-260 Broad Street
Birmingham
B1 2HF
w: www.terraquest.co.uk
e: info@terraquest.co.uk



Created for:
Tritax Symmetry Management Limited
Grange Park Court
Roman Way
Northampton
NN4 5EA



A TRITAX BIG BOX COMPANY

Title:
Hinckley National Rail Freight Interchange Crown Land Plan Sheet 8 of 8

Scale: 1:2,500@A1 Date: 08/12/2022

Drawing No: 1842-8018_003345 Revision: v8.0

Drawing Ref: 2.26H Regulation: 5(2) (n)

Approved By: SAN	Checked By: LMCK	Drawn By: RCA
---------------------	---------------------	------------------