

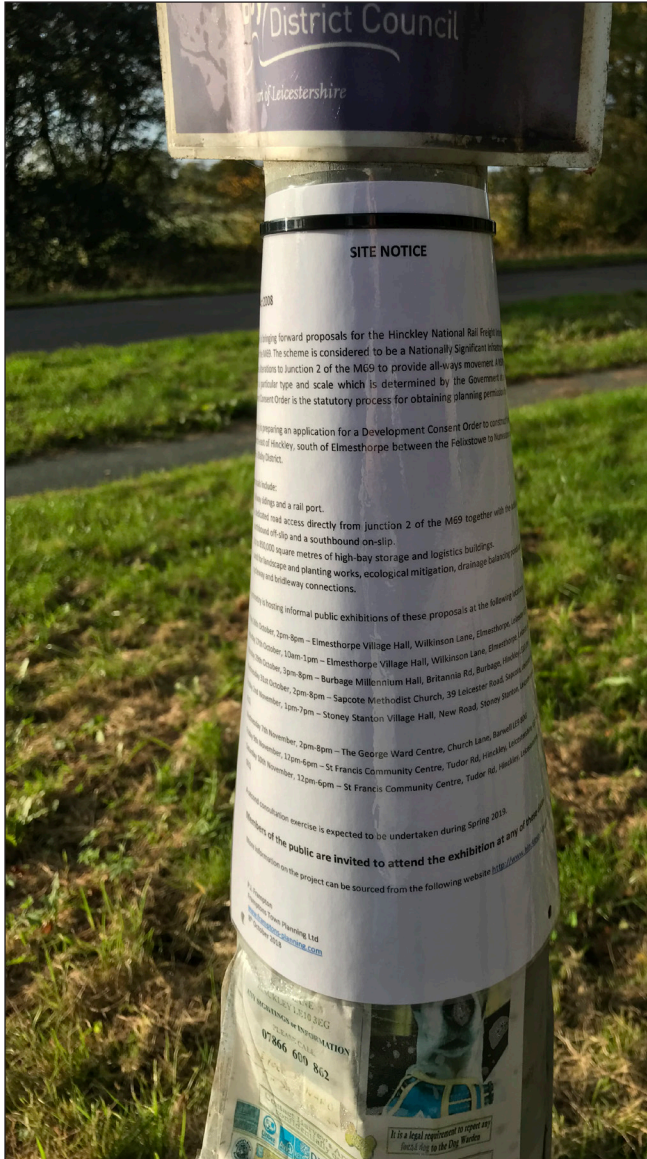
Appendix 5.6 (Part 2 of 2)

5a - B4669 before J2 of the M69



## 5a - B4669 before J2 of the M69

Pictures were taken at 09.19 on Tuesday 9th October 2018

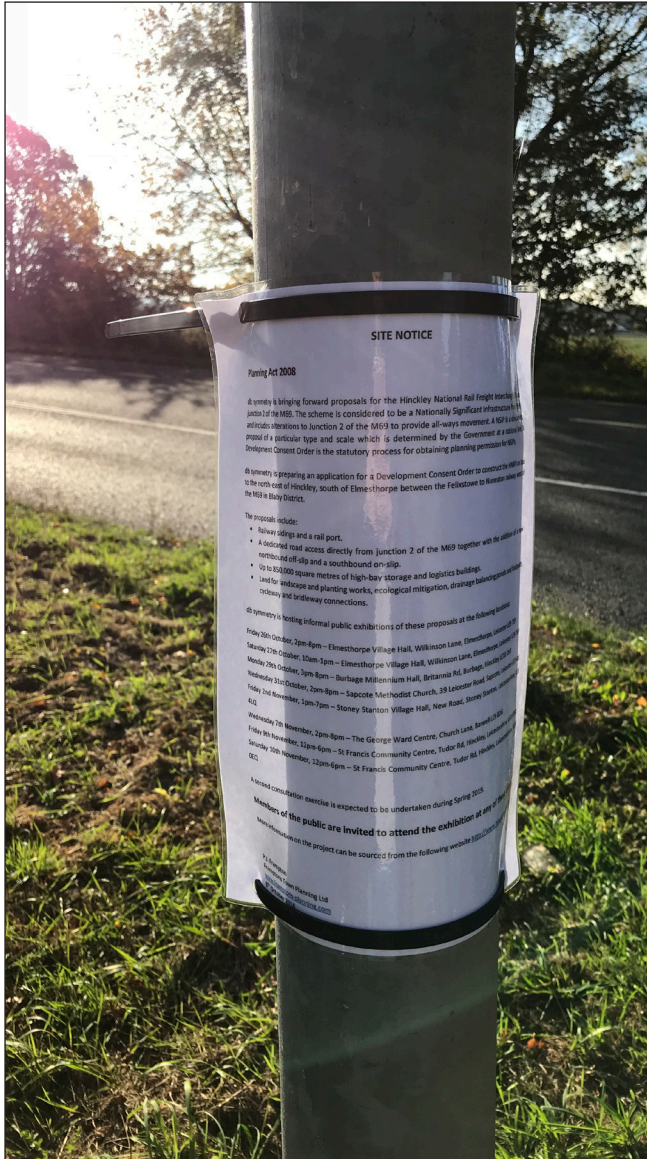


5b - B4669 before J2 of the M69



## 5b - B4669 before J2 of the M69

Pictures were taken at 09.28 on Tuesday 9th October 2018

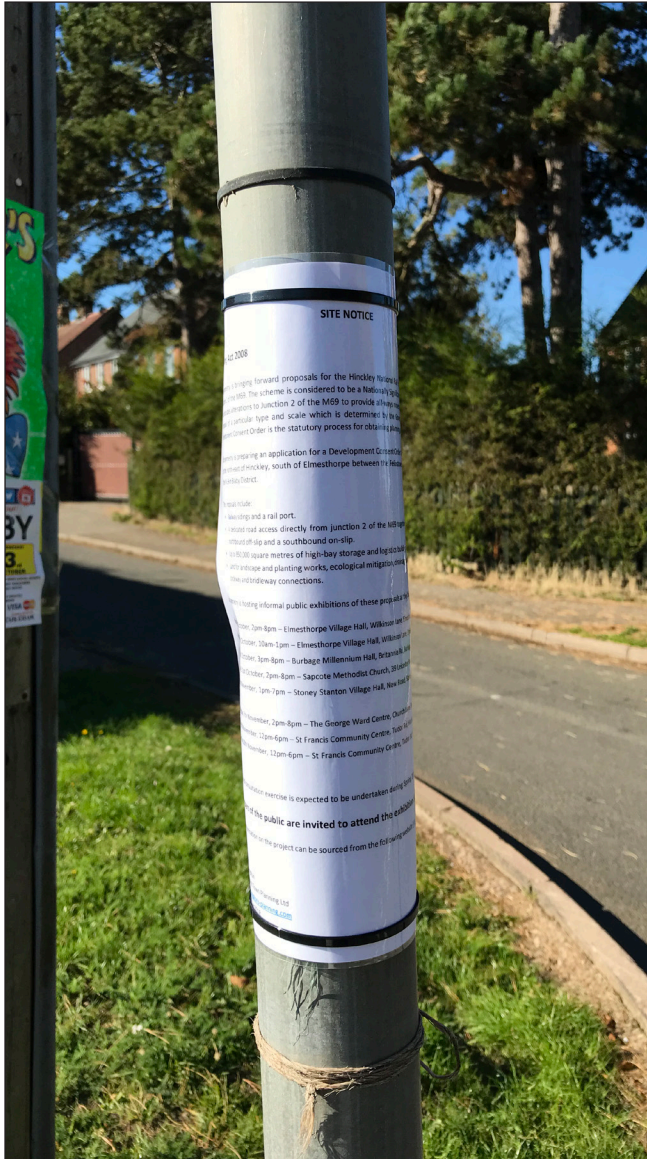


6 - Station Road at Junction with Burbage Common Road



## 6 - Station Road at Junction with Burbage Common Road

Pictures were taken at 11.32 on Tuesday 9th October 2018



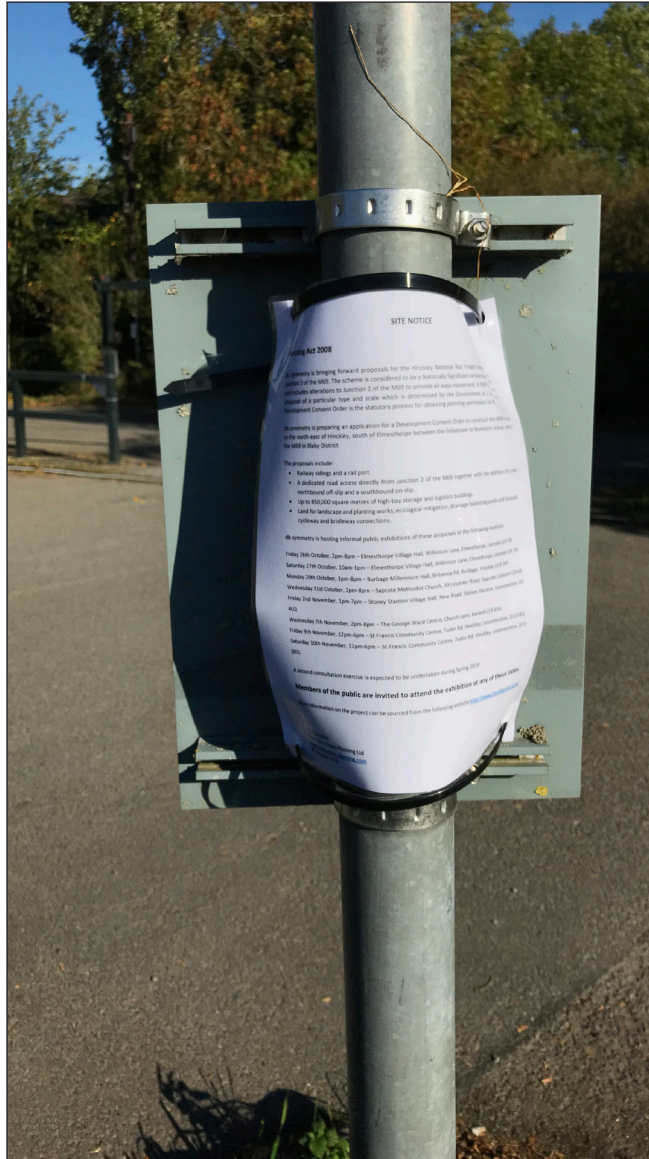
## 7 - Car Park Entrance and Visitor Centre at Burbage Common





## 7 - Car Park Entrance and Visitor Centre at Burbage Common

Pictures were taken at 10.36 on Tuesday 9th October 2018



8 - Smithy Lane Car Park, Hinckley



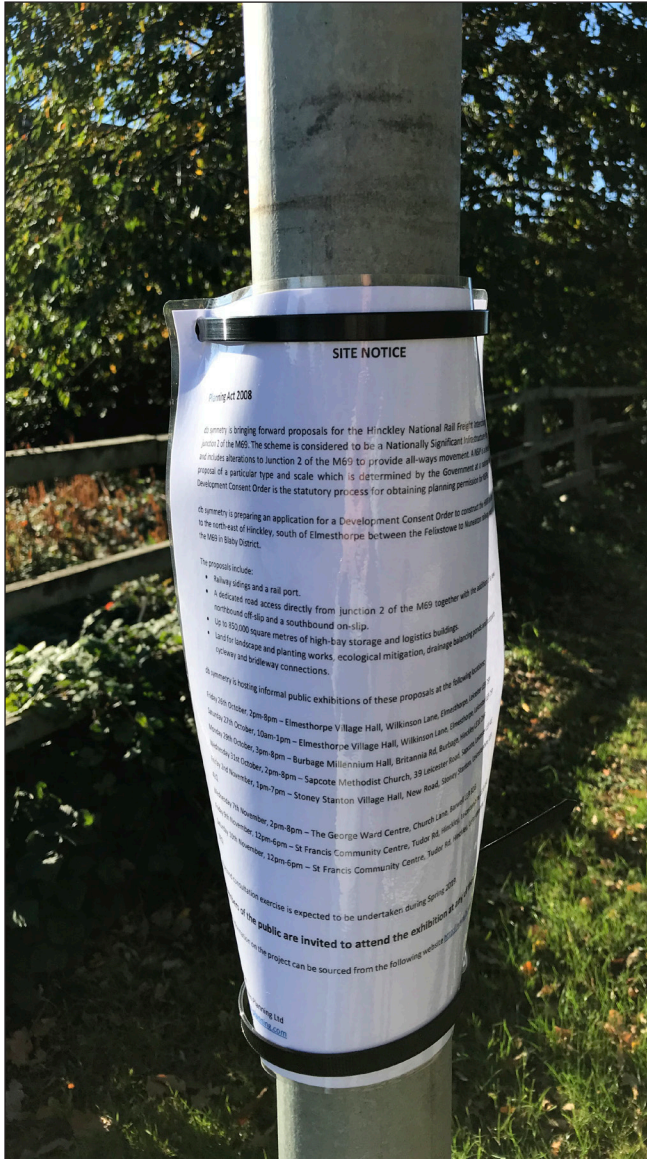


9 - Leicester Road towards Hinckley at the commencement of frontage of housing – on lighting



## 9 - Leicester Road towards Hinckley at the commencement of frontage of housing – on lighting

Pictures were taken at 10.29 on Tuesday 9th October 2018



10 - Sapcote Road

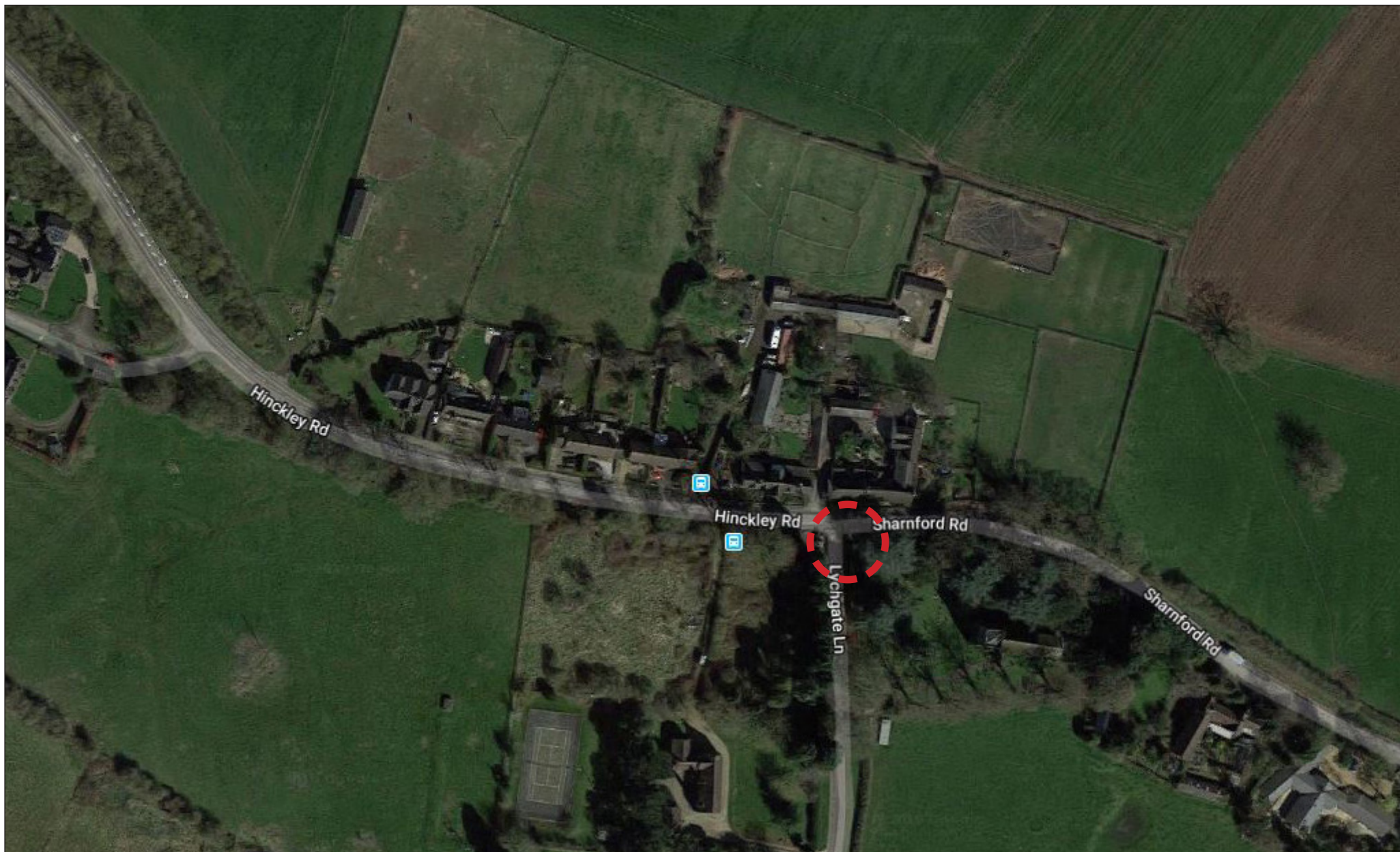


## 10 - Sapcote Road

Pictures were taken at 09.11 on Tuesday 9th October 2018



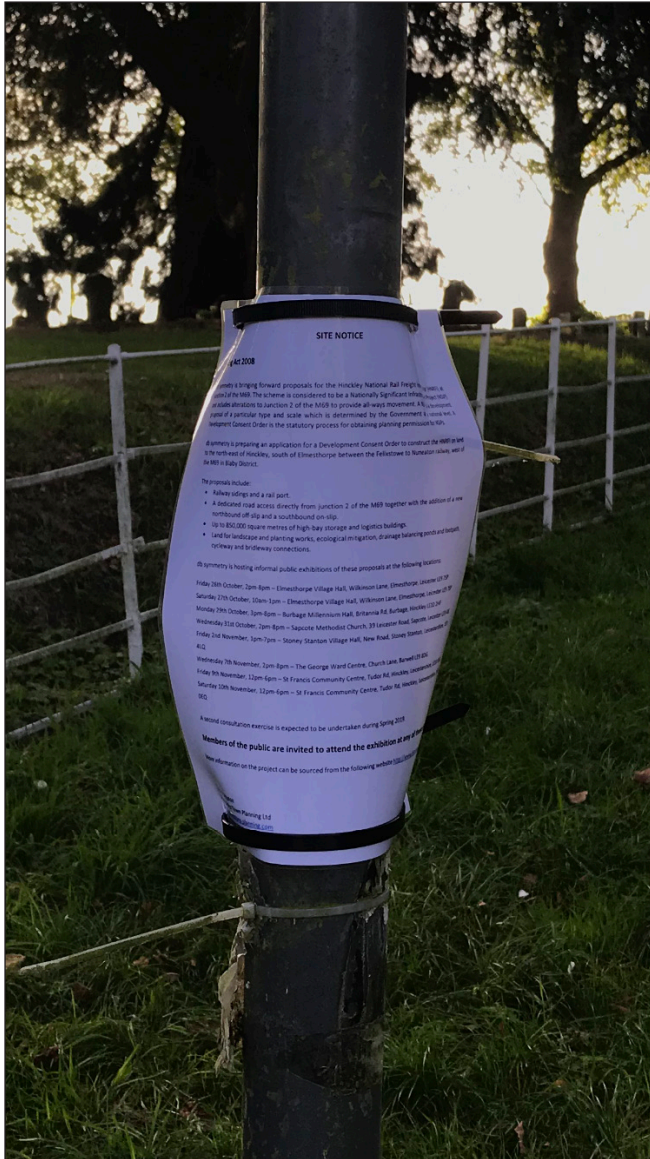
11 - Lychgate Lane, Hinckley Road, Sharnford Road





# 11 - Lychgate Lane, Hinckley Road, Sharnford Road

Pictures were taken at 09.02 on Tuesday 9th October 2018



## **PF/9575: Hinckley Strategic Rail Freight Interchange Site Notices Document**

### **Introduction**

- 1) Site notices were erected to advertise a series of exhibition with regard to the proposed Hinckley Strategic Rail Freight Interchange.
- 2) Exhibition were located at the following locations:

Friday 26<sup>th</sup> October: 2pm-8pm  
Elmesthorpe Village Hall

Saturday 27<sup>th</sup> October: 10am-1pm  
Elmesthorpe Village Hall

Monday 29<sup>th</sup> October: 3pm-8pm  
Burbage Millennium Hall

Wednesday 31<sup>st</sup> October: 2pm-8pm  
Sapcote Methodist Church

Friday 2<sup>nd</sup> November: 1pm-7pm  
Stoney Stanton Village Hall

Wednesday 7<sup>th</sup> November: 2pm-8pm  
The George Ward Centre

Friday 9<sup>th</sup> November: 12pm-6pm  
St Francis Community Centre

Saturday 10<sup>th</sup> November: 12pm-6pm  
St Francis Community Centre

### **Site Notice Locations**

- 3) To ensure at least 2-weeks notice was given prior to beginning of the consultation events, site notices were erected on Tuesday 9th October 2018.
- 4) Site notices were erected in the following locations:
  1. Burbage Common Road South of Elmesthorpe
  2. Burbage Common Road at Railway Bridge
  3. Road Junction leading from M69 J2 (Private Road)
  4. Along the Public Right of Way at the point of entry-exit

- 4a. Gate adjacent caravan park
- 4b. Entrance to Burbage Common & Woods off Smithy Lane
- 4c. Gate close to Burbage Common & Woods car park
- 4d. Public right of way entrance south from Burbage Common & Woods
- 4e. Public right of way entrance north from Burbage Common & Woods
- 4f. Railway crossing
- 4g. Footpath close to bridge over M69
- 5a. Caravan park junction with Hinckley Road
- 5b. East of layby on Hinckley Road
6. Station Road at Junction with Burbage Common Road
7. Car Park Entrance and Visitor Centre at Burbage Common
8. Smithy Lane Car Park,
9. Leicester Road towards Hinckley at the commencement of frontage of housing
10. Sapcote Road
11. Lychgate Lane, Hinckley Road, Sharnford Road

5) Site notices were erected between 09.02am and 11.32am.

6) **Appendix 1** provides an overview of the location of site notices.

7) **Appendix 2** provides location specific maps and images of each notice displayed at the above locations.